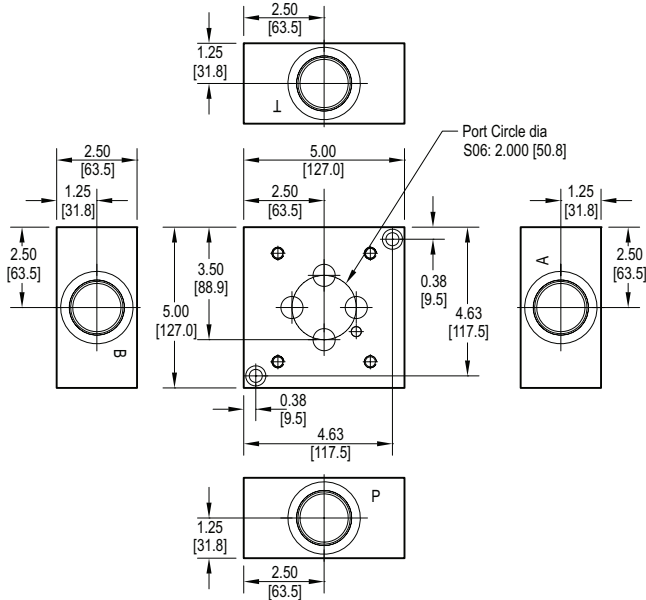


# Daman S06 Servo Subplate, Pilot Port Tapping Plate 2.000 Port Circle

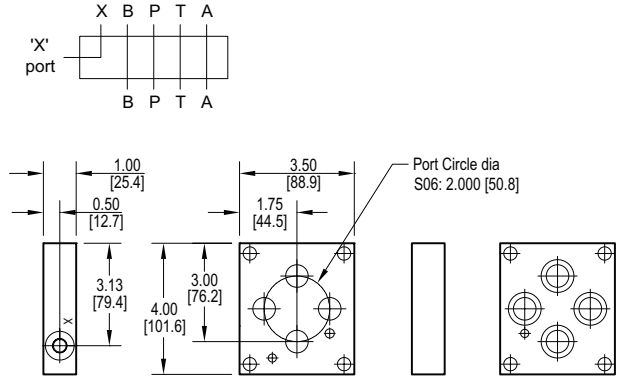
## Side Ported Subplate

Valve mtg: UNC 0.38-16 UNC x 1.00 DP or  
Metric M10-1.5mm ISO 6H x [25.4] DP  
Subplate hardware kit is supplied.  
See page 154 for itemized list.



## Pilot Port Tapping Plate

Subplate interface seal kit is supplied.\*  
See page 154 for itemized list.  
\* Plug not included on metric ported parts.



Use this tapping plate when an external pilot port is required. This tapping plate stacks between the valve and subplate. Valve mounting bolts of sufficient length to pass through the valve and this tapping plate are supplied by the user.

Specifications, descriptions, and dimensional data are subject to correction or change without notice or incurring obligation. Download latest catalog page revisions at [www.daman.com](http://www.daman.com).

## Ordering Information

Material	Servo Valve Pattern	Product Type	Port Location / Circuit	Port Threads																																								
<table border="1"> <tr><th colspan="2">Material</th></tr> <tr><td><b>A</b></td><td>Aluminum - 6061-T6 3000<sup>†</sup> psi • 20.7 MPa</td></tr> <tr><td><b>D</b></td><td>Ductile Iron - D4512 5000<sup>†</sup> psi • 34.5 MPa</td></tr> <tr><td colspan="2"><sup>†</sup> Working pressure should be considered in accordance with ISO 4413 to determine appropriate material type.</td></tr> </table>	Material		<b>A</b>	Aluminum - 6061-T6 3000 <sup>†</sup> psi • 20.7 MPa	<b>D</b>	Ductile Iron - D4512 5000 <sup>†</sup> psi • 34.5 MPa	<sup>†</sup> Working pressure should be considered in accordance with ISO 4413 to determine appropriate material type.		<table border="1"> <tr><th colspan="2">Servo Pattern</th></tr> <tr><td colspan="2">See page 139 and Tech Info</td></tr> <tr><td><b>S06</b></td><td>ISO 10372-06-05 Daman std. S06</td></tr> </table>	Servo Pattern		See page 139 and Tech Info		<b>S06</b>	ISO 10372-06-05 Daman std. S06	<table border="1"> <tr><th colspan="2">Product Type</th></tr> <tr><td><b>SP</b></td><td>Subplate</td></tr> <tr><td><b>TP</b></td><td>Tapping Plate</td></tr> </table>	Product Type		<b>SP</b>	Subplate	<b>TP</b>	Tapping Plate	<table border="1"> <tr><th colspan="2">Port Loc. / Circuit</th></tr> <tr><td><b>S</b></td><td>Side ported (Subplate only)</td></tr> <tr><td><b>X</b></td><td>X Port (Tapping Plate only)</td></tr> </table>	Port Loc. / Circuit		<b>S</b>	Side ported (Subplate only)	<b>X</b>	X Port (Tapping Plate only)	<p>For <b>coating options</b> see pages 245-246.</p> <table border="1"> <tr><th colspan="2">Port Threads</th></tr> <tr><th colspan="2">Subplate Port Sizes Only</th></tr> <tr><td><b>20S</b></td><td>-20 SAE ISO 11926; SAE 1926</td></tr> <tr><td><b>20M</b></td><td>M42 x 2.0 ISO 6149</td></tr> <tr><th colspan="2">Tapping Plate Port Sizes Only</th></tr> <tr><td><b>4S</b></td><td>-4 SAE ISO 11926; SAE 1926</td></tr> <tr><td><b>4M</b></td><td>M10 x 1.0 ISO 6149</td></tr> </table>	Port Threads		Subplate Port Sizes Only		<b>20S</b>	-20 SAE ISO 11926; SAE 1926	<b>20M</b>	M42 x 2.0 ISO 6149	Tapping Plate Port Sizes Only		<b>4S</b>	-4 SAE ISO 11926; SAE 1926	<b>4M</b>	M10 x 1.0 ISO 6149
Material																																												
<b>A</b>	Aluminum - 6061-T6 3000 <sup>†</sup> psi • 20.7 MPa																																											
<b>D</b>	Ductile Iron - D4512 5000 <sup>†</sup> psi • 34.5 MPa																																											
<sup>†</sup> Working pressure should be considered in accordance with ISO 4413 to determine appropriate material type.																																												
Servo Pattern																																												
See page 139 and Tech Info																																												
<b>S06</b>	ISO 10372-06-05 Daman std. S06																																											
Product Type																																												
<b>SP</b>	Subplate																																											
<b>TP</b>	Tapping Plate																																											
Port Loc. / Circuit																																												
<b>S</b>	Side ported (Subplate only)																																											
<b>X</b>	X Port (Tapping Plate only)																																											
Port Threads																																												
Subplate Port Sizes Only																																												
<b>20S</b>	-20 SAE ISO 11926; SAE 1926																																											
<b>20M</b>	M42 x 2.0 ISO 6149																																											
Tapping Plate Port Sizes Only																																												
<b>4S</b>	-4 SAE ISO 11926; SAE 1926																																											
<b>4M</b>	M10 x 1.0 ISO 6149																																											