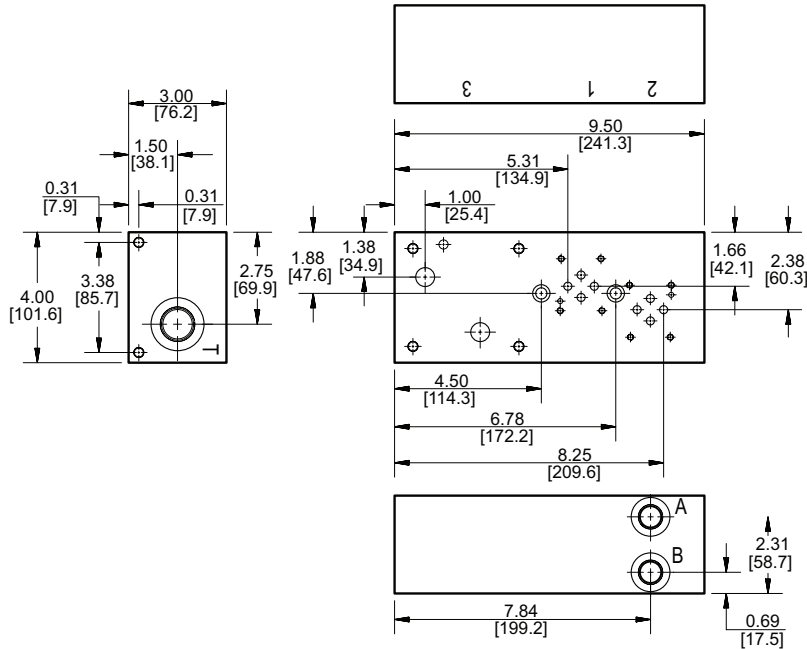
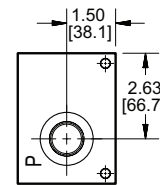
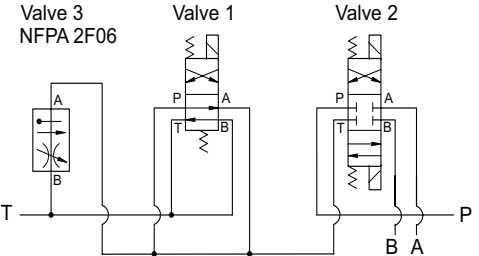


D03 Tank Line Feed Circuit Manifold

D03 Directional Valves
2F06 Flow Control Valve
 Valve mtg: D03: UNC #10-24 x 0.63 DP
 2F06: UNC 0.31-18 x 0.63 DP



“Meter Out” Tank Feed Circuit



Manifold Mounting:

Manifold bracket mounting kit is supplied. See page 64 for itemized mounting kit list.

Two SHCS clearance holes are provided for optional 5/16 (M8) SHCS mounting. Screws are user provided; minimum 3.00 in [75mm] long GR8 SHCS should be used.

Specifications, descriptions, and dimensional data are subject to correction or change without notice or incurring obligation. Download latest catalog page revisions at www.daman.com.

Ordering Information

Material	Valve Pattern	Circuit	Port Threads
----------	---------------	---------	--------------

For **coating options** see pages 245-246.

Material	
A	Aluminum - 6061-T6 3000 [†] psi • 20.7 MPa
D	Ductile Iron - D4512 5000 [†] psi • 34.5 MPa

[†] Working pressure should be considered in accordance with ISO 4413 to determine appropriate material type.

Valve Pattern	
D03	ISO 4401-03-02 NFFA T3.5.1-D03 See Tech Information
Flow Control Pattern (REF): 2F06 Pattern ISO 6263-06-05 NFFA T3.5.1-2F06	

Circuit	
TF	Tank Line Feed Circuit

Port Threads			
	P & T	A & B	
P	NPTF • ANSI B1.20.3	0.75	0.38
S	SAE • ISO 11926	-12	-8