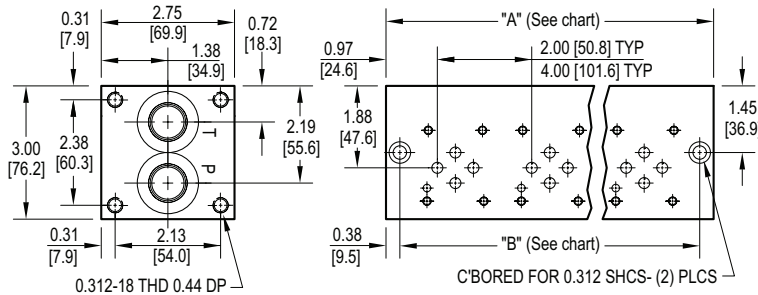
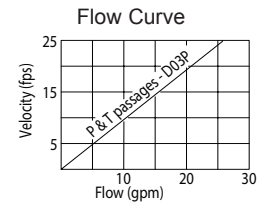
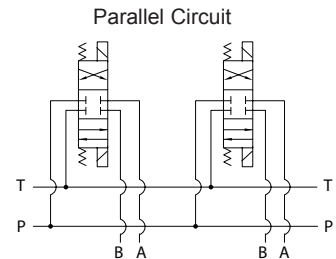
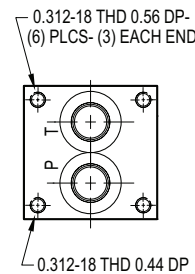
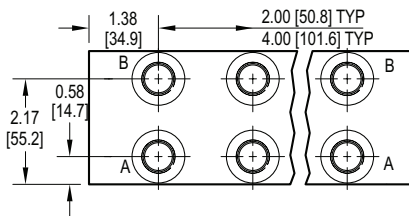


D03 FlexMount Parallel Circuit Manifold



NOTE:
Mounting hardware is sold separately.

See page 62 for available bracket, screw, flange and gasket mounting kits.



Rated flow 14 gpm @ 15 fps

Code 2 (2.00") valve spacing										
No. of stations	* 01	02	03	04	05	06	07	08	09	10
"A" length inch [mm]	2.75 [69.9]	4.75 [120.7]	6.75 [171.5]	8.75 [222.3]	10.75 [273.1]	12.75 [323.9]	14.75 [374.7]	16.75 [425.5]	18.75 [476.3]	20.75 [527.1]
"B" dimension inch [mm]	2.00 [50.8]	4.00 [101.6]	6.00 [152.4]	8.00 [203.2]	10.00 [254.0]	12.00 [304.8]	14.00 [355.6]	16.00 [406.4]	18.00 [457.2]	20.00 [508.0]
apx. weight alum lb [kg]	2.5 [1.2]	4 [2]	6 [3]	7.5 [4]	9 [4.5]	11 [5]	12 [5.5]	14 [6.5]	15.5 [7]	17 [8]
apx. weight ferrous lb [kg]	6 [3]	10.5 [5]	15 [7]	19 [9]	23 [11]	28 [13]				

* "A" length of 01 station with relief cavity is 3.75 [95.3]. "B" dimension is 3.00 [76.2].

Code 4 (4.00") valve spacing				
No. of stations	02	03	04	05
"A" length inch [mm]	6.75 [171.5]	10.75 [273.1]	14.75 [374.7]	18.75 [476]
"B" dimension inch [mm]	6.00 [152.4]	10.00 [254.0]	14.00 [355.6]	18.00 [457.2]
apx. weight alum lb [kg]	6 [3]	9 [4.5]	13 [6]	15 [7]
apx. weight ferrous lb [kg]	15 [8]	23 [12]	32 [15]	

Specifications, descriptions, and dimensional data are subject to correction or change without notice or incurring obligation. Download latest catalog page revisions at www.daman.com.

Ordering Information

For **coating options** see pages 245-246.

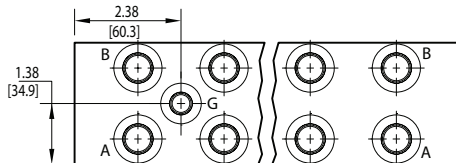
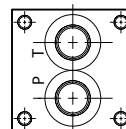
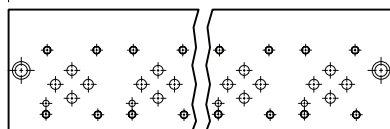
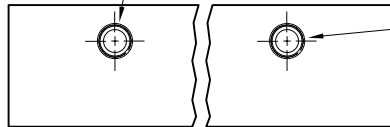
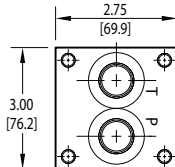
Product Line	Material	Valve Pattern	Circuit	No. of Stations	Valve Spacing	Port Threads	Options	
Product Line L FlexMount	Material A Aluminum - 6061-T6 3000† psi • 20.7 MPa D Ductile Iron - D4512 5000† psi • 34.5 MPa † Working pressure should be considered in accordance with ISO 4413 to determine appropriate material type.	Valve Pattern D03 ISO 4401-03-02 NFPA T3.5.1-D03 See Tech Information	Circuit P Parallel Circuit Standard Flow	No. of Stations Aluminum 01...10 Available with spacing code 2 02...05 Available with spacing code 4 Ductile Iron 01...06 Available with spacing code 2 02...04 Available with spacing code 4	Valve Spacing 2 2.00 inch [50.8 mm] 4 4.00 inch [101.6 mm]	Port Threads P NPTF • ANSI B1.20.3 0.50 0.38 S SAE • ISO 11926 -10 -8	Options See next page for available options and ordering codes.	

Options - D03 FlexMount Parallel Manifold

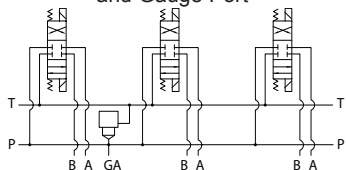
Contact Daman for cavity locations if critical.

Valve cavity location when cavity, or cavity-isolation combination L or D is specified.

Valve cavity location for cavity-isolation combination R or D.

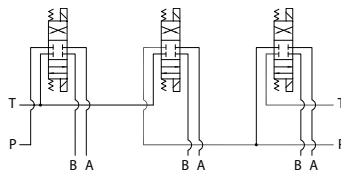


Parallel Circuit with Cavity and Gauge Port



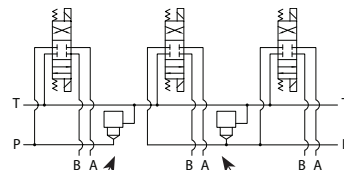
Valves with P in the nose and T out the side must be used.

Parallel Circuit with Isolations



Manifold shown with P isolation between 1 & 2 (PA), and T isolation between 2 & 3 (TB).

Cavity & Isolation Combinations



Option code L
Cavity left of isolation
Option code R
Cavity right of isolation
Option code D includes both cavities

ISOLATIONS

Daman isolation options allow a manifold to have two independent pressure and/or tank ports. Isolations are drilled rather than plugged to ensure a leakproof and failproof isolation.

Ordering code letter:	* Isolation is between stations:	Available # of stations:
2.00 [50.8] spacing		
A	01 & 02	02-10
B	02 & 03	03-10
C	03 & 04	04-10
D	04 & 05	05-10
E	05 & 06	06-10
F	06 & 07	07-10
G	07 & 08	08-10
H	08 & 09	09-10
J	09 & 10	10
4.00 [101.6] spacing		
A	01 & 02	02-05
B	02 & 03	03-05
C	03 & 04	04-05
D	04 & 05	05

* Stations are numbered left to right.

NOTES:

- 1) The GA port is not available on a (1) station manifold.
- 2) The GA port is not available when a pressure isolation is specified.
- 3) Some cavity and isolation combinations are not possible. Consult factory to determine availability.

Ordering Information

...	Gauge Port	Cavity	Pressure Isolation	Tank Isolation	Cavity & Isolation Combinations
-----	------------	--------	--------------------	----------------	---------------------------------

Gauge Port
Omit if gauge port not required.
G Gauge Port for system pressure
If Port Thread code is: P, then Gauge port = 0.25 NPTF S, then Gauge port = -4 SAE

Cavity
Omit if cavity not required.
C Common cavity: No solenoid clearance C-10-2 (P in nose) For valves w/1" hex max.
S Sun Cavity: T-10A (P in nose) See Tech Info for valves.

Tank Isolation
Omit if T isolation not required.
TA...TJ Available with spacing code 2
TA...TD Available with spacing code 4

Relief / Isolation Combinations
Specify when using a combination of cavity and isolation options. Cavities do not have solenoid clearance.
L Relief cavity is located left of the isolation.
R Relief cavity is located right of the isolation.
D Two relief cavities, one each side of isolation.

Pressure Isolation
Omit if P isolation not required. Not available with G option.
PA...PJ Available with spacing code 2
PA...PD Available with spacing code 4