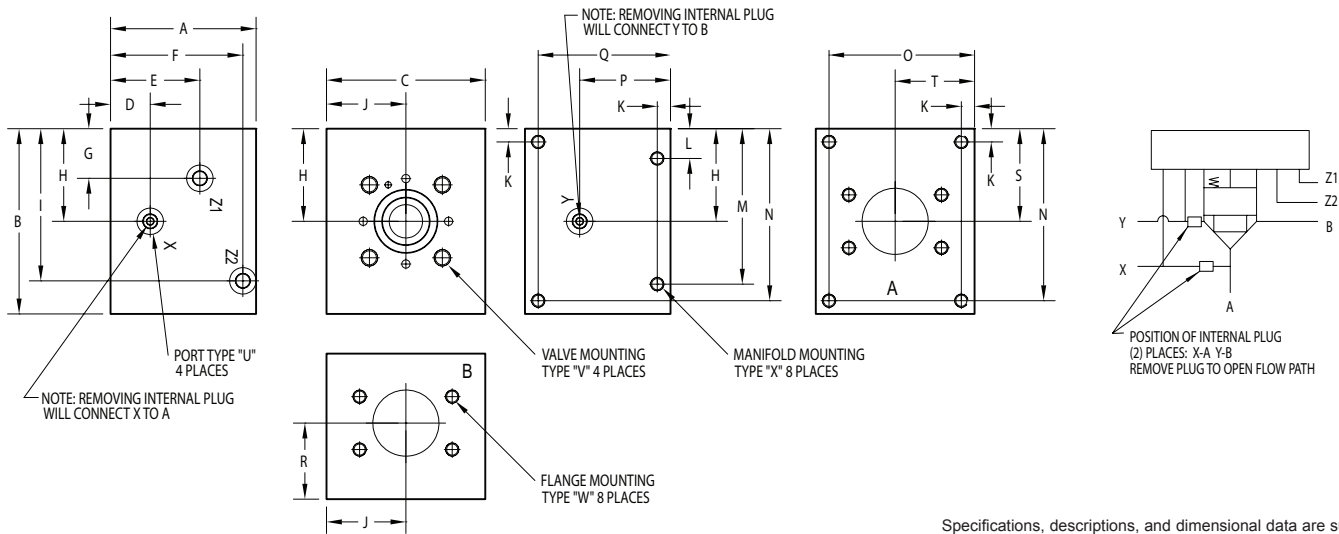


50mm Body • XA Circuit

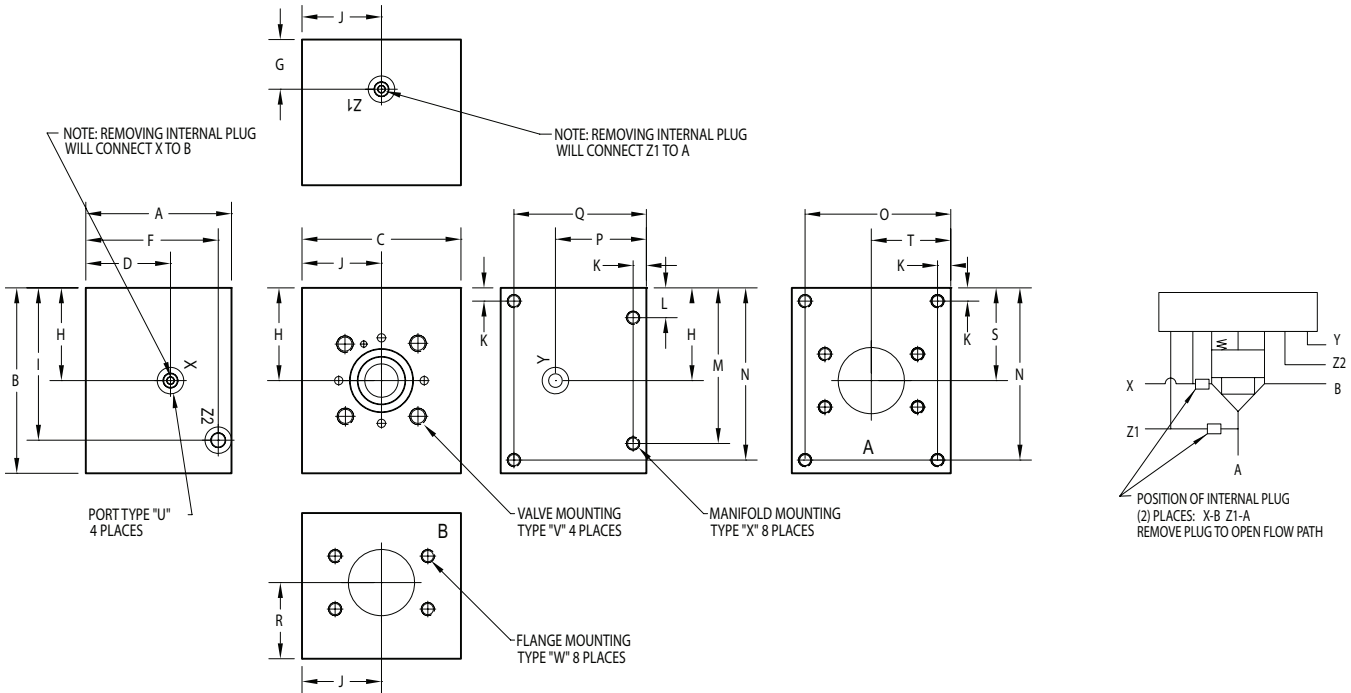


Specifications, descriptions, and dimensional data are subject to correction or change without notice or incurring obligation. Download latest catalog page revisions at www.daman.com.

PART NO.	A	B	C	D	E	F	G	H	I	J	K	L	M	N	O	P
50XA40F61	7.00 [177.8]	7.00 [177.8]	6.00 [152.4]	1.50 [38.1]	4.50 [114.3]	6.50 [165.1]	0.75 [19.1]	3.25 [82.6]	6.13 [155.6]	3.00 [76.2]	0.50 [12.7]	1.13 [28.6]	5.88 [149.2]	6.50 [165.1]	5.50 [139.7]	4.15 [105.3]
50XB40F61	7.00 [177.8]	7.00 [177.8]	6.00 [152.4]	4.15 [105.3]	--	6.50 [165.1]	1.50 [38.1]	3.25 [82.6]	6.13 [155.6]	3.00 [76.2]	0.50 [12.7]	1.13 [28.6]	5.88 [149.2]	6.50 [165.1]	5.50 [139.7]	4.15 [105.3]
D50XA40F62*	7.00 [177.8]	8.00 [203.2]	7.00 [177.8]	1.50 [38.1]	4.50 [114.3]	6.50 [165.1]	1.25 [31.8]	3.75 [95.3]	6.62 [168.3]	3.50 [88.9]	0.50 [12.7]	1.13 [28.6]	6.88 [174.6]	7.50 [190.5]	6.50 [165.1]	4.15 [105.3]
D50XB40F62*	7.00 [177.8]	8.00 [203.2]	7.00 [177.8]	4.15 [105.3]	--	6.50 [165.1]	1.50 [38.1]	3.75 [95.3]	6.62 [168.3]	3.50 [88.9]	0.50 [12.7]	1.13 [28.6]	6.88 [174.6]	7.50 [190.5]	6.50 [165.1]	4.15 [105.3]
50XA64F61	7.00 [177.8]	7.25 [184.2]	6.50 [165.1]	1.50 [38.1]	4.15 [105.4]	6.50 [165.1]	1.19 [30.2]	3.50 [88.9]	6.38 [161.9]	3.25 [82.6]	0.50 [12.7]	1.13 [28.6]	6.13 [155.6]	6.75 [171.5]	6.00 [152.4]	4.15 [105.3]
50XB64F61	7.00 [177.8]	7.25 [184.2]	6.50 [165.1]	4.15 [105.3]	--	6.50 [165.1]	1.50 [38.1]	3.50 [88.9]	6.38 [161.9]	3.25 [82.6]	0.50 [12.7]	1.13 [28.6]	6.13 [155.6]	6.75 [171.5]	6.00 [152.4]	4.15 [105.3]

PART NO.	Q	R	S	T	U pilot port size	V valve mounting	W flange mounting	X manifold mounting
*50XA40F61V	6.50 [165.1]	4.15 [105.3]	3.25 [82.6]	3.00 [76.2]	SAE #6	0.75 UNC x 1.62 DP	0.50 UNC x 1.19 DP	0.50 UNC x 1.00 DP
*50XA40F61R					SAE #6	0.88 UNC x 1.62 DP	0.50 UNC x 1.19 DP	0.50 UNC x 1.00 DP
*50XA40F61M					ISO 6149 M14	M20 ISO 6H x 41 DP	M12 ISO 6H x 30 DP	M12 ISO 6H x 25 DP
*50XB40F61V	6.50 [165.1]	4.15 [105.3]	3.25 [82.6]	3.00 [76.2]	SAE #6	0.75 UNC x 1.62 DP	0.50 UNC x 1.19 DP	0.50 UNC x 1.00 DP
*50XB40F61R					SAE #6	0.88 UNC x 1.62 DP	0.50 UNC x 1.19 DP	0.50 UNC x 1.00 DP
*50XB40F61M					ISO 6149 M14	M20 ISO 6H x 41 DP	M12 ISO 6H x 30 DP	M12 ISO 6H x 25 DP
D50XA40F62V	6.50 [165.1]	4.00 [101.6]	3.75 [95.3]	3.50 [88.9]	SAE #6	0.75 UNC x 1.62 DP	0.88 UNC x 1.75 DP	0.50 UNC x 1.00 DP
D50XA40F62R					SAE #6	0.88 UNC x 1.62 DP	0.88 UNC x 1.75 DP	0.50 UNC x 1.00 DP
D50XA40F62M					ISO 6149 M14	M20 ISO 6H x 41 DP	M24 ISO 6H x 45 DP	M12 ISO 6H x 25 DP
D50XB40F62V	6.50 [165.1]	4.00 [101.6]	3.75 [95.3]	3.50 [88.9]	SAE #6	0.75 UNC x 1.62 DP	0.88 UNC x 1.75 DP	0.50 UNC x 1.00 DP
D50XB40F62R					SAE #6	0.88 UNC x 1.62 DP	0.88 UNC x 1.75 DP	0.50 UNC x 1.00 DP
D50XB40F62M					ISO 6149 M14	M20 ISO 6H x 41 DP	M24 ISO 6H x 45 DP	M12 ISO 6H x 25 DP
*50XA64F61V	6.50 [165.1]	3.88 [98.4]	3.50 [88.9]	3.25 [82.6]	SAE #6	0.75 UNC x 1.62 DP	0.63 UNC x 1.44 DP	0.50 UNC x 1.19 DP
*50XA64F61R					SAE #6	0.88 UNC x 1.62 DP	0.63 UNC x 1.44 DP	0.50 UNC x 1.19 DP
*50XA64F61M					ISO 6149 M14	M20 ISO 6H x 41 DP	M16 ISO 6H x 36 DP	M12 ISO 6H x 30 DP
*50XB64F61V	6.50 [165.1]	3.88 [98.4]	3.50 [88.9]	3.25 [82.6]	SAE #6	0.75 UNC x 1.62 DP	0.63 UNC x 1.44 DP	0.50 UNC x 1.19 DP
*50XB64F61R					SAE #6	0.88 UNC x 1.62 DP	0.63 UNC x 1.44 DP	0.50 UNC x 1.19 DP
*50XB64F61M					ISO 6149 M14	M20 ISO 6H x 41 DP	M16 ISO 6H x 36 DP	M12 ISO 6H x 30 DP

50mm Body • XB Circuit



Specifications, descriptions, and dimensional data are subject to correction or change without notice or incurring obligation. Download latest catalog page revisions at www.daman.com.

Ordering Information

For coating options see pages 245-246.

Material	Valve Cavity	Pilot Circuit	A & B Port Size	Flange Rating	Thread Type
----------	--------------	---------------	-----------------	---------------	-------------

Material	
A	Aluminum - 6061-T6 3000 [†] psi • 20.7 MPa
D	Ductile Iron - D4512 5000 [†] psi • 34.5 MPa

[†] Working pressure should be considered in accordance with ISO 4413 to determine appropriate material type.

Pilot Circuit	
XA	X common to A Y common to B
XB	X common to B Z1 common to A

These connections are furnished plugged (external pilot ports). Remove plugs for internal pilot ports. See circuit diagram.

Flange Rating	
Aluminum or Ductile	
61	ISO 6162 - 2.5 to 35 MPa SAE code 61
Port size 40F, Ductile only	
62	ISO 6162 - 40 MPa series SAE code 62

Valve Cavity	
50	DIN 24342 - 50mm ISO 7368-11-09 (Standard currently under revision) NFPA T3.5.45-BE-11-2-A

A & B Port Size	
40F	ISO 6162 - DN64 Split Flange SAE Size 40 (2.50") Flange
64F	ISO 6162 - DN102 Split Flange SAE Size 64 (4.00") Flange

Thread Type	
V	Inch threads / ports Valve mtg. = 0.75-10
R	Inch threads / ports Valve mtg. = 0.875-9
M	Metric threads / ports Valve mtg. = M20-2.5

Custom Products
Standard Manifolds
Cover Plates
Valve Adaptors
Subplates
Servo Valve Subplates
Tapping Plates
DIN Cartridge Valve Bodies
Header and Junction Blocks
Technical Information