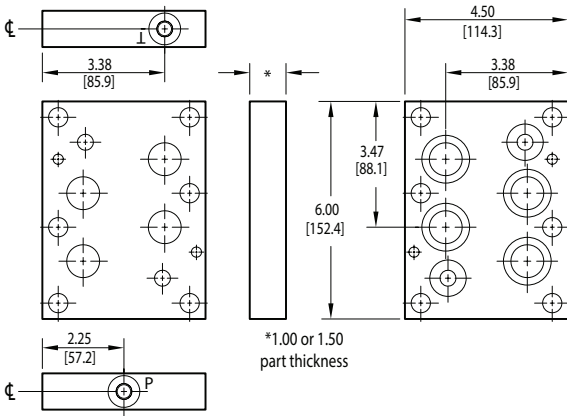
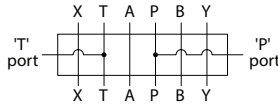


# D08 Tapping Plates

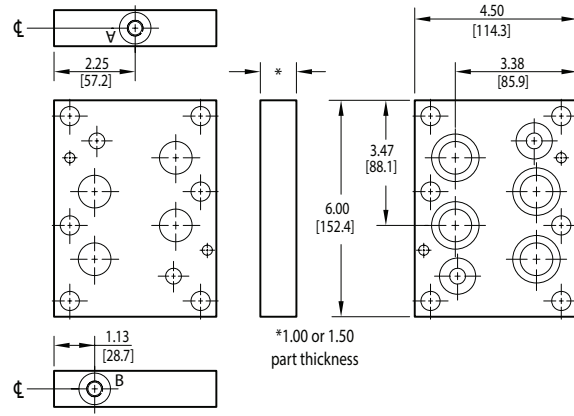
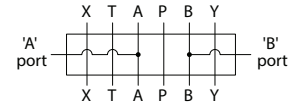
## P and T Port Tapping Plate

Tapping Plate hardware / interface seal kit is supplied. See page 180 for itemized list.



## A and B Port Tapping Plate

Tapping Plate hardware / interface seal kit is supplied. See page 180 for itemized list.



Specifications, descriptions, and dimensional data are subject to correction or change without notice or incurring obligation. Download latest catalog page revisions at [www.daman.com](http://www.daman.com).

# Ordering Information

For **coating options** see pages 245-246.

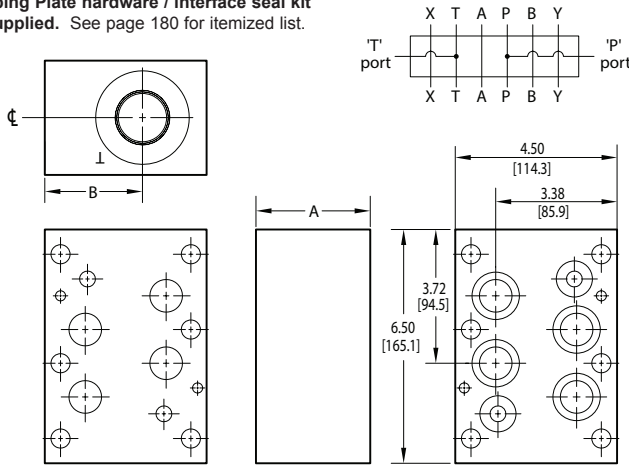
Material	Valve Pattern	Product Type	Circuit	Port Threads	Thickness																																								
<table border="1"> <thead> <tr> <th colspan="2">Material</th> </tr> </thead> <tbody> <tr> <td><b>A</b></td> <td>Aluminum - 6061-T6 3000<sup>†</sup> psi • 20.7 MPa</td> </tr> <tr> <td><b>D</b></td> <td>Ductile Iron - D4512 5000<sup>†</sup> psi • 34.5 MPa</td> </tr> <tr> <td colspan="2"> <sup>†</sup> Working pressure should be considered in accordance with ISO 4413 to determine appropriate material type.                 </td> </tr> </tbody> </table>	Material		<b>A</b>	Aluminum - 6061-T6 3000 <sup>†</sup> psi • 20.7 MPa	<b>D</b>	Ductile Iron - D4512 5000 <sup>†</sup> psi • 34.5 MPa	<sup>†</sup> Working pressure should be considered in accordance with ISO 4413 to determine appropriate material type.		<table border="1"> <thead> <tr> <th colspan="2">Valve Pattern</th> </tr> </thead> <tbody> <tr> <td><b>D08</b></td> <td>ISO 4401-08-07 NFPA T3.5.1-D08 See Tech Infomation</td> </tr> </tbody> </table>	Valve Pattern		<b>D08</b>	ISO 4401-08-07 NFPA T3.5.1-D08 See Tech Infomation	<table border="1"> <thead> <tr> <th colspan="2">Product Type</th> </tr> </thead> <tbody> <tr> <td><b>TP</b></td> <td>Tapping Plate</td> </tr> </tbody> </table>	Product Type		<b>TP</b>	Tapping Plate	<table border="1"> <thead> <tr> <th colspan="2">Circuit</th> </tr> </thead> <tbody> <tr> <td><b>PT</b></td> <td>P and T ports provided</td> </tr> <tr> <td><b>AB</b></td> <td>A and B ports provided</td> </tr> </tbody> </table>	Circuit		<b>PT</b>	P and T ports provided	<b>AB</b>	A and B ports provided	<table border="1"> <thead> <tr> <th colspan="2">Port Threads</th> </tr> </thead> <tbody> <tr> <td><b>4P</b></td> <td>0.25-18 NPTF ANSI B1.20.3</td> </tr> <tr> <td><b>4S</b></td> <td>-4 SAE ISO 11926; SAE 1926</td> </tr> <tr> <td><b>4B</b></td> <td>0.25-19 BSPP ISO 1179; BS 2779</td> </tr> <tr> <td><b>4M</b></td> <td>M10 x 1.0 ISO 6149</td> </tr> <tr> <td><b>4T</b></td> <td>0.25-19 BSPT ISO 7; BS 21</td> </tr> </tbody> </table>	Port Threads		<b>4P</b>	0.25-18 NPTF ANSI B1.20.3	<b>4S</b>	-4 SAE ISO 11926; SAE 1926	<b>4B</b>	0.25-19 BSPP ISO 1179; BS 2779	<b>4M</b>	M10 x 1.0 ISO 6149	<b>4T</b>	0.25-19 BSPT ISO 7; BS 21	<table border="1"> <thead> <tr> <th colspan="2">Thickness</th> </tr> </thead> <tbody> <tr> <td><b>150</b></td> <td>For 1.5" thickness</td> </tr> <tr> <td colspan="2">OMIT for standard 1" thickness</td> </tr> </tbody> </table>	Thickness		<b>150</b>	For 1.5" thickness	OMIT for standard 1" thickness	
Material																																													
<b>A</b>	Aluminum - 6061-T6 3000 <sup>†</sup> psi • 20.7 MPa																																												
<b>D</b>	Ductile Iron - D4512 5000 <sup>†</sup> psi • 34.5 MPa																																												
<sup>†</sup> Working pressure should be considered in accordance with ISO 4413 to determine appropriate material type.																																													
Valve Pattern																																													
<b>D08</b>	ISO 4401-08-07 NFPA T3.5.1-D08 See Tech Infomation																																												
Product Type																																													
<b>TP</b>	Tapping Plate																																												
Circuit																																													
<b>PT</b>	P and T ports provided																																												
<b>AB</b>	A and B ports provided																																												
Port Threads																																													
<b>4P</b>	0.25-18 NPTF ANSI B1.20.3																																												
<b>4S</b>	-4 SAE ISO 11926; SAE 1926																																												
<b>4B</b>	0.25-19 BSPP ISO 1179; BS 2779																																												
<b>4M</b>	M10 x 1.0 ISO 6149																																												
<b>4T</b>	0.25-19 BSPT ISO 7; BS 21																																												
Thickness																																													
<b>150</b>	For 1.5" thickness																																												
OMIT for standard 1" thickness																																													

For larger ports, see next page (p. 173.1).

# D08 Tapping Plates - Large Ports

## P and T Port Tapping Plate

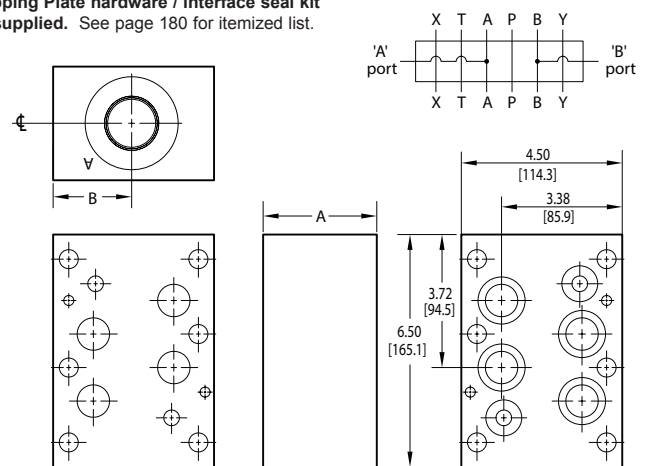
Tapping Plate hardware / interface seal kit is supplied. See page 180 for itemized list.



Dimension	A	B	C
*D08TPPT12*	3.00 [76.2]	2.92 [74.2]	2.25 [57.2]
*D08TPPT16*	3.50 [88.9]	2.92 [74.2]	2.25 [57.2]
*D08TPPT20*	4.00 [101.6]	2.75 [69.9]	2.25 [57.2]

## A and B Port Tapping Plate

Tapping Plate hardware / interface seal kit is supplied. See page 180 for itemized list.



Dimension	A	B	C
*D08TPAB12*	3.00 [76.2]	2.25 [57.2]	1.58 [40.1]
*D08TPAB16*	3.50 [88.9]	2.25 [57.2]	1.58 [40.1]
*D08TPAB20*	4.00 [101.6]	2.25 [57.2]	1.75 [44.5]

Specifications, descriptions, and dimensional data are subject to correction or change without notice or incurring obligation. Download latest catalog page revisions at [www.daman.com](http://www.daman.com).

# Ordering Information

For **coating options** see pages 245-246.



Material	
<b>A</b>	Aluminum - 6061-T6 3000† psi • 20.7 MPa
<b>D</b>	Ductile Iron - D4512 5000† psi • 34.5 MPa

† Working pressure should be considered in accordance with ISO 4413 to determine appropriate material type.

Product Type	
<b>TP</b>	Tapping Plate

Valve Pattern	
<b>D08</b>	ISO 4401-08-07 NFPA T3.5.1-D08 See Tech Information

Circuit	
<b>PT</b>	P and T ports provided
<b>AB</b>	A and B ports provided

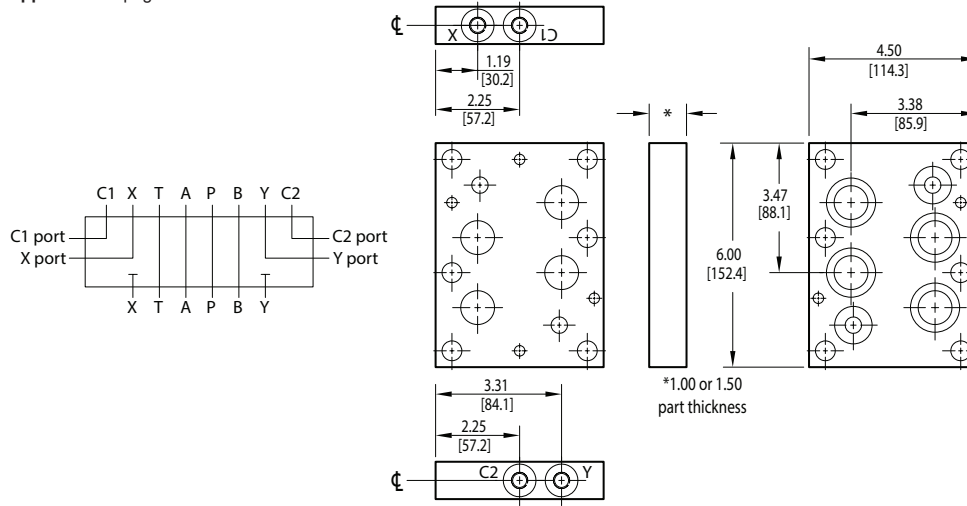
Port Threads			
<b>12P</b>	0.75-14 NPTF ANSI B1.20.3	<b>16P</b>	1.00-11.5 NPTF ANSI B1.20.3
<b>12S</b>	-12 SAE ISO 11926; SAE 1926	<b>16S</b>	-16 SAE ISO 11926; SAE 1926
<b>12B</b>	0.75-14 BSPP ISO 1179; BS 2779	<b>16B</b>	1.00-11 BSPP ISO 1179; BS 2779
<b>12M</b>	M27 x 2.0 ISO 6149	<b>16M</b>	M33 x 2.0 ISO 6149
<b>12T</b>	0.75-14 BSPT ISO 7; BS 21	<b>16T</b>	1.00-11 BSPT ISO 7; BS 21
		<b>20P</b>	1.25-11.5 NPTF ANSI B1.20.3
		<b>20S</b>	-20 SAE ISO 11926; SAE 1926
		<b>20B</b>	1.25-11 BSPP ISO 1179; BS 2779
		<b>20M</b>	M42 x 2.0 ISO 6149
		<b>20T</b>	1.25-11 BSPT ISO 7; BS 21

For smaller ports, see previous page (p. 173).

# D08 Tapping Plates

## X and Y Port Tapping Plate

Tapping Plate hardware / interface seal kit is supplied. See page 180 for itemized list.



Specifications, descriptions, and dimensional data are subject to correction or change without notice or incurring obligation. Download latest catalog page revisions at [www.daman.com](http://www.daman.com).

# Ordering Information

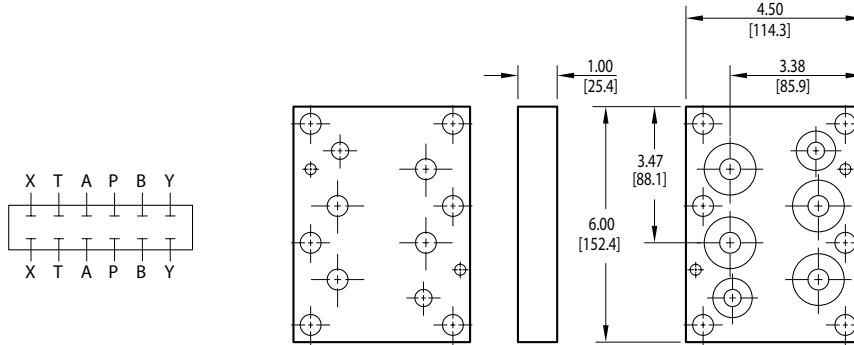
For **coating options** see pages 245-246.

Material	Valve Pattern	Product Type	Circuit	Port Threads	Thickness																																						
<table border="1"> <thead> <tr> <th colspan="2">Material</th> </tr> </thead> <tbody> <tr> <td><b>A</b></td> <td>Aluminum - 6061-T6 3000<sup>†</sup> psi • 20.7 MPa</td> </tr> <tr> <td><b>D</b></td> <td>Ductile Iron - D4512 5000<sup>†</sup> psi • 34.5 MPa</td> </tr> <tr> <td colspan="2"><sup>†</sup> Working pressure should be considered in accordance with ISO 4413 to determine appropriate material type.</td> </tr> </tbody> </table>	Material		<b>A</b>	Aluminum - 6061-T6 3000 <sup>†</sup> psi • 20.7 MPa	<b>D</b>	Ductile Iron - D4512 5000 <sup>†</sup> psi • 34.5 MPa	<sup>†</sup> Working pressure should be considered in accordance with ISO 4413 to determine appropriate material type.		<table border="1"> <thead> <tr> <th colspan="2">Valve Pattern</th> </tr> </thead> <tbody> <tr> <td><b>D08</b></td> <td>ISO 4401-08-07 NFPA T3.5.1-D08 See Tech Information</td> </tr> </tbody> </table>	Valve Pattern		<b>D08</b>	ISO 4401-08-07 NFPA T3.5.1-D08 See Tech Information	<table border="1"> <thead> <tr> <th colspan="2">Product Type</th> </tr> </thead> <tbody> <tr> <td><b>TP</b></td> <td>Tapping Plate</td> </tr> </tbody> </table>	Product Type		<b>TP</b>	Tapping Plate	<table border="1"> <thead> <tr> <th colspan="2">Circuit</th> </tr> </thead> <tbody> <tr> <td><b>XY</b></td> <td>X and Y ports provided</td> </tr> </tbody> </table>	Circuit		<b>XY</b>	X and Y ports provided	<table border="1"> <thead> <tr> <th colspan="2">Port Threads</th> </tr> </thead> <tbody> <tr> <td><b>4P</b></td> <td>0.25-18 NPTF ANSI B1.20.3</td> </tr> <tr> <td><b>4S</b></td> <td>-4 SAE ISO 11926; SAE 1926</td> </tr> <tr> <td><b>4B</b></td> <td>0.25-19 BSPP ISO 1179; BS 2779</td> </tr> <tr> <td><b>4M</b></td> <td>M10 x 1.0 ISO 6149</td> </tr> <tr> <td><b>4T</b></td> <td>0.25-19 BSPT ISO 7; BS 21</td> </tr> </tbody> </table>	Port Threads		<b>4P</b>	0.25-18 NPTF ANSI B1.20.3	<b>4S</b>	-4 SAE ISO 11926; SAE 1926	<b>4B</b>	0.25-19 BSPP ISO 1179; BS 2779	<b>4M</b>	M10 x 1.0 ISO 6149	<b>4T</b>	0.25-19 BSPT ISO 7; BS 21	<table border="1"> <thead> <tr> <th colspan="2">Thickness</th> </tr> </thead> <tbody> <tr> <td><b>150</b></td> <td>For 1.5" thickness</td> </tr> <tr> <td colspan="2">OMIT for standard 1" thickness</td> </tr> </tbody> </table>	Thickness		<b>150</b>	For 1.5" thickness	OMIT for standard 1" thickness	
Material																																											
<b>A</b>	Aluminum - 6061-T6 3000 <sup>†</sup> psi • 20.7 MPa																																										
<b>D</b>	Ductile Iron - D4512 5000 <sup>†</sup> psi • 34.5 MPa																																										
<sup>†</sup> Working pressure should be considered in accordance with ISO 4413 to determine appropriate material type.																																											
Valve Pattern																																											
<b>D08</b>	ISO 4401-08-07 NFPA T3.5.1-D08 See Tech Information																																										
Product Type																																											
<b>TP</b>	Tapping Plate																																										
Circuit																																											
<b>XY</b>	X and Y ports provided																																										
Port Threads																																											
<b>4P</b>	0.25-18 NPTF ANSI B1.20.3																																										
<b>4S</b>	-4 SAE ISO 11926; SAE 1926																																										
<b>4B</b>	0.25-19 BSPP ISO 1179; BS 2779																																										
<b>4M</b>	M10 x 1.0 ISO 6149																																										
<b>4T</b>	0.25-19 BSPT ISO 7; BS 21																																										
Thickness																																											
<b>150</b>	For 1.5" thickness																																										
OMIT for standard 1" thickness																																											

# D08 Tapping Plates

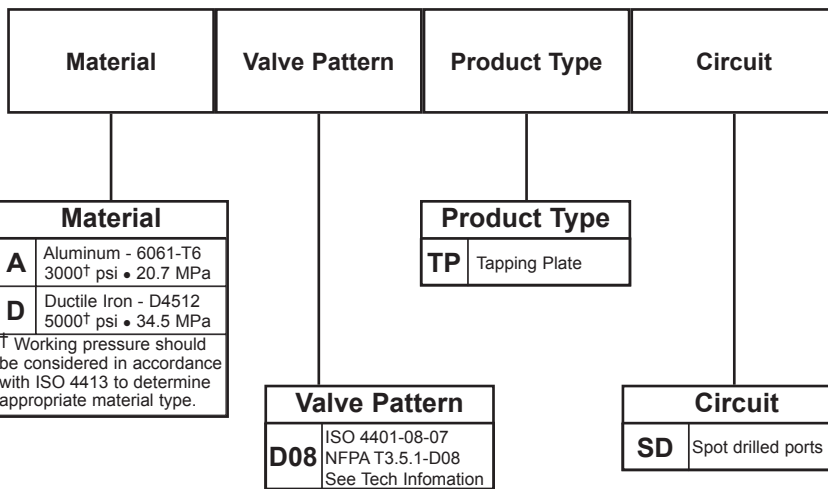
## Spot Drilled Tapping Plate

Tapping Plate hardware / interface seal kit is supplied. See page 180 for itemized list.



Specifications, descriptions, and dimensional data are subject to correction or change without notice or incurring obligation. Download latest catalog page revisions at [www.daman.com](http://www.daman.com).

## Ordering Information



For **coating options** see pages 245-246.

# D08 Tapping Plates

## D03-D08 Two Station Tapping Plate A<sub>1</sub> common to A<sub>2</sub>, B<sub>1</sub> common to B<sub>2</sub>

**D03 Valve mtg:** UNC #10-24 x 0.62 [16] DP

**Tapping Plate hardware / interface seal kit is supplied.** \* See page 180 for itemized list.

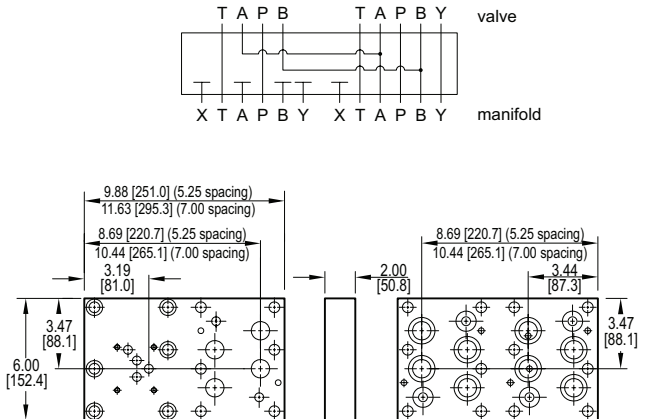
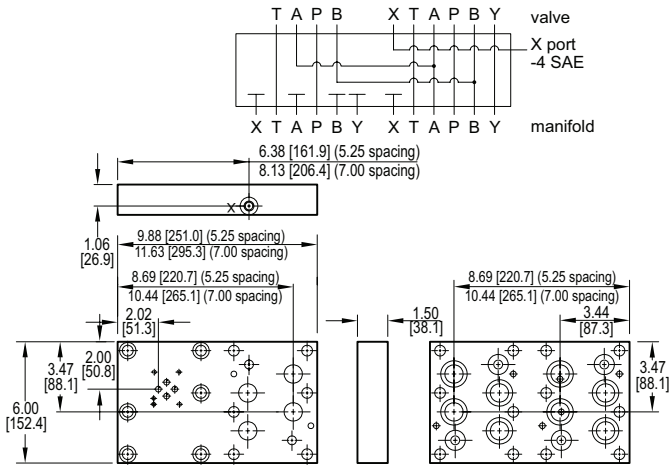
\* (6) bolts are user supplied and must pass through valve and tapping plate to thread into manifold.

## D05-D08 Two Station Tapping Plate A<sub>1</sub> common to A<sub>2</sub>, B<sub>1</sub> common to B<sub>2</sub>

**D05 Valve mtg:** UNC 0.25-20 x 0.75 [19] DP

**Tapping Plate hardware / interface seal kit is supplied.** \* See page 180 for itemized list.

\* (6) bolts are user supplied and must pass through valve and tapping plate to thread into manifold.



Specifications, descriptions, and dimensional data are subject to correction or change without notice or incurring obligation. Download latest catalog page revisions at [www.daman.com](http://www.daman.com).

# Ordering Information

For **coating options** see pages 245-246.

Material	Valve Pattern Station 1	Valve Pattern Station 2	Product Type	No. of Stations	Valve Spacing	Circuit
----------	-------------------------	-------------------------	--------------	-----------------	---------------	---------

Material	
<b>A</b>	Aluminum - 6061-T6 3000 <sup>†</sup> psi • 20.7 MPa
<b>D</b>	Ductile Iron - D4512 5000 <sup>†</sup> psi • 34.5 MPa

<sup>†</sup> Working pressure should be considered in accordance with ISO 4413 to determine appropriate material type.

Valve Station 2	
<b>D08</b>	ISO 4401-08-07 NFPA T3.5.1-D08 See Tech Information

No. of Stations	
<b>02</b>	02 Stations

Circuit	
<b>AB</b>	A1 common to A2 B1 common to B2

Valve Station 1	
<b>D03</b>	ISO 4401-03-02 NFPA T3.5.1-D03 See Tech Information
<b>D05</b>	ISO 4401-05-04 NFPA T3.5.1-D05 See Tech Information

Product Type	
<b>TP</b>	Tapping Plate

Valve Spacing	
<b>5</b>	5.25 inch 133.4 mm
<b>7</b>	7.00 inch 177.8 mm