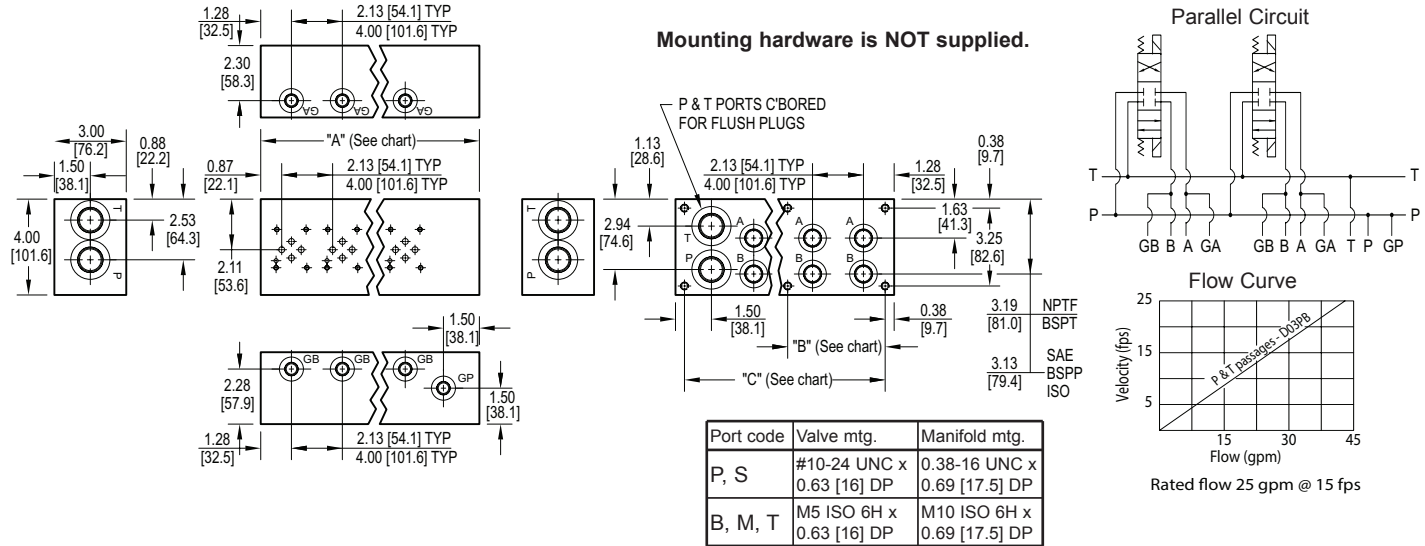


# D03 Standard Flow Bottom Ported Manifold With A & B Test Ports



No. of stations	*01	02	03	04	05	06	07	08	09	10	11	12	No. of stations	02	03	04	05	06
"A" length (code 2 spa.) inch [mm]	4.38 [111.1]	6.50 [165.1]	8.63 [219.1]	10.75 [273.1]	12.88 [327.0]	15.00 [381.0]	17.13 [435.0]	19.25 [489.0]	21.38 [542.9]	23.50 [596.9]	25.63 [650.9]	27.75 [704.9]	"A" length (code 4 spa.) inch [mm]	8.38 [212.7]	12.38 [314.3]	16.38 [415.9]	20.38 [517.5]	24.38 [619.1]
"B" dim (code 2 spa.) inch [mm]	--	--	--	--	--	--	8.34 [211.9]	8.34 [211.9]	10.47 [265.9]	10.47 [265.9]	12.59 [319.9]	12.59 [319.9]	"B" dim (code 4 spa.) inch [mm]	--	--	--	10.91 [277.0]	10.91 [277.0]
"C" dim (code 2 spa.) inch [mm]	3.63 [92.1]	5.75 [146.1]	7.88 [200.0]	10.00 [254.0]	12.13 [308.0]	14.25 [362.0]	16.38 [415.9]	18.50 [469.9]	20.63 [523.9]	22.75 [577.9]	24.88 [631.8]	27.00 [685.8]	"C" dim (code 4 spa.) inch [mm]	7.63 [193.7]	11.63 [295.3]	15.63 [396.9]	19.63 [498.5]	23.38 [600.1]
apx. weight alum lb [kg]	5 [2]	8 [4]	10 [5]	13 [6]	15 [7]	18 [8]	21 [9]	23 [10]	26 [12]	28 [13]	31 [14]	33 [15]	apx. weight alum lb [kg]	10 [5]	15 [7]	20 [9]	24 [11]	29 [13]
apx. weight ferrous lb [kg]	14 [6]	20 [9]	27 [12]	34 [15]	40 [18]	47 [21]	53 [24]	60 [27]	67 [30]	73 [33]	80 [36]	87 [39]	apx. weight ferrous lb [kg]	26 [12]	39 [18]	51 [23]	64 [29]	76 [34]

\* Length of 01 station with relief cavity is 5.00 [127.0]

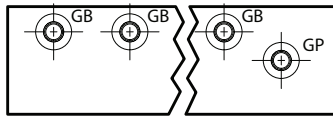
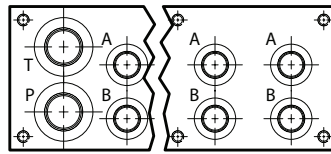
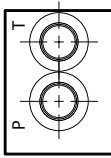
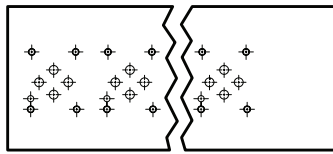
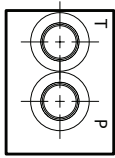
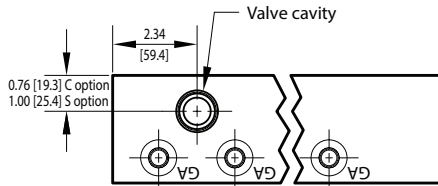
Specifications, descriptions, and dimensional data are subject to correction or change without notice or incurring obligation. Download latest catalog page revisions at [www.daman.com](http://www.daman.com).

For coating options see pages 245-246.

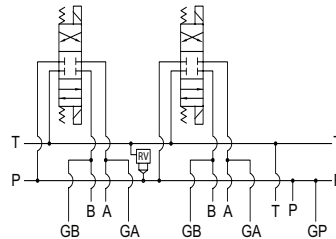
## Ordering Information

Material	Valve Pattern	Circuit	No. of Stations	Valve Spacing	Port Threads	Options																																															
<table border="1"> <thead> <tr> <th colspan="2">Material</th> </tr> </thead> <tbody> <tr> <td><b>A</b></td> <td>Aluminum - 6061-T6 3000† psi • 20.7 MPa</td> </tr> <tr> <td><b>D</b></td> <td>Ductile Iron - D4512 5000† psi • 34.5 MPa</td> </tr> </tbody> </table> <p>† Working pressure should be considered in accordance with ISO 4413 to determine appropriate material type.</p>	Material		<b>A</b>	Aluminum - 6061-T6 3000† psi • 20.7 MPa	<b>D</b>	Ductile Iron - D4512 5000† psi • 34.5 MPa	<table border="1"> <thead> <tr> <th colspan="2">Circuit</th> </tr> </thead> <tbody> <tr> <td><b>PB</b></td> <td>Parallel Circuit Standard Flow Bottom Ported</td> </tr> </tbody> </table>	Circuit		<b>PB</b>	Parallel Circuit Standard Flow Bottom Ported	<table border="1"> <thead> <tr> <th colspan="2">Valve Spacing</th> </tr> </thead> <tbody> <tr> <td><b>2</b></td> <td>2.13 inch 54.0 mm</td> </tr> <tr> <td><b>4</b></td> <td>4.00 inch 101.6 mm</td> </tr> </tbody> </table>	Valve Spacing		<b>2</b>	2.13 inch 54.0 mm	<b>4</b>	4.00 inch 101.6 mm	<table border="1"> <thead> <tr> <th colspan="2">Options</th> </tr> </thead> <tbody> <tr> <td colspan="2">See next page for available options and ordering codes.</td> </tr> </tbody> </table>	Options		See next page for available options and ordering codes.																															
Material																																																					
<b>A</b>	Aluminum - 6061-T6 3000† psi • 20.7 MPa																																																				
<b>D</b>	Ductile Iron - D4512 5000† psi • 34.5 MPa																																																				
Circuit																																																					
<b>PB</b>	Parallel Circuit Standard Flow Bottom Ported																																																				
Valve Spacing																																																					
<b>2</b>	2.13 inch 54.0 mm																																																				
<b>4</b>	4.00 inch 101.6 mm																																																				
Options																																																					
See next page for available options and ordering codes.																																																					
<table border="1"> <thead> <tr> <th colspan="2">Valve Pattern</th> </tr> </thead> <tbody> <tr> <td><b>D03</b></td> <td>ISO 4401-03-02 NFPA T3.5.1-D03 See Tech Information</td> </tr> </tbody> </table>		Valve Pattern		<b>D03</b>	ISO 4401-03-02 NFPA T3.5.1-D03 See Tech Information	<table border="1"> <thead> <tr> <th colspan="2">No. of Stations</th> </tr> </thead> <tbody> <tr> <td colspan="2">Aluminum</td> </tr> <tr> <td><b>01...12</b></td> <td>Available with spacing code 2</td> </tr> <tr> <td><b>02...06</b></td> <td>Available with spacing code 4</td> </tr> <tr> <td colspan="2">Ductile Iron</td> </tr> <tr> <td><b>01...12</b></td> <td>Available with spacing code 2</td> </tr> <tr> <td><b>02...06</b></td> <td>Available with spacing code 4</td> </tr> </tbody> </table>		No. of Stations		Aluminum		<b>01...12</b>	Available with spacing code 2	<b>02...06</b>	Available with spacing code 4	Ductile Iron		<b>01...12</b>	Available with spacing code 2	<b>02...06</b>	Available with spacing code 4	<table border="1"> <thead> <tr> <th colspan="2">Port Threads</th> <th>P &amp; T</th> <th>A &amp; B</th> <th>G*</th> </tr> </thead> <tbody> <tr> <td><b>P</b></td> <td>NPTF • ANSI B1.20.3</td> <td>0.75</td> <td>0.50</td> <td>0.25</td> </tr> <tr> <td><b>S</b></td> <td>SAE • ISO 11926</td> <td>-12</td> <td>-8</td> <td>-4</td> </tr> <tr> <td><b>B</b></td> <td>BSPP • ISO 1179</td> <td>0.75</td> <td>0.50</td> <td>0.25</td> </tr> <tr> <td><b>M</b></td> <td>ISO • ISO 6149</td> <td>M27</td> <td>M18</td> <td>M10</td> </tr> <tr> <td><b>T</b></td> <td>BSPT • ISO 7</td> <td>0.75</td> <td>0.50</td> <td>0.25</td> </tr> </tbody> </table>		Port Threads		P & T	A & B	G*	<b>P</b>	NPTF • ANSI B1.20.3	0.75	0.50	0.25	<b>S</b>	SAE • ISO 11926	-12	-8	-4	<b>B</b>	BSPP • ISO 1179	0.75	0.50	0.25	<b>M</b>	ISO • ISO 6149	M27	M18	M10	<b>T</b>	BSPT • ISO 7	0.75	0.50	0.25
Valve Pattern																																																					
<b>D03</b>	ISO 4401-03-02 NFPA T3.5.1-D03 See Tech Information																																																				
No. of Stations																																																					
Aluminum																																																					
<b>01...12</b>	Available with spacing code 2																																																				
<b>02...06</b>	Available with spacing code 4																																																				
Ductile Iron																																																					
<b>01...12</b>	Available with spacing code 2																																																				
<b>02...06</b>	Available with spacing code 4																																																				
Port Threads		P & T	A & B	G*																																																	
<b>P</b>	NPTF • ANSI B1.20.3	0.75	0.50	0.25																																																	
<b>S</b>	SAE • ISO 11926	-12	-8	-4																																																	
<b>B</b>	BSPP • ISO 1179	0.75	0.50	0.25																																																	
<b>M</b>	ISO • ISO 6149	M27	M18	M10																																																	
<b>T</b>	BSPT • ISO 7	0.75	0.50	0.25																																																	

# Options - D03 Standard Flow Bottom Ported Manifold With A & B Test Ports



Parallel circuit with one cavity.



Valves with P in the nose and T out the side must be used.

## Ordering Information



Cavity	
Omit if cavities not required	
<b>C</b>	One Common cavity: No solenoid clearance. C-10-2 (P in nose) For valves w/1" hex max.
<b>S</b>	One Sun Cavity: T-10A (P in nose) See Tech Info for valves.